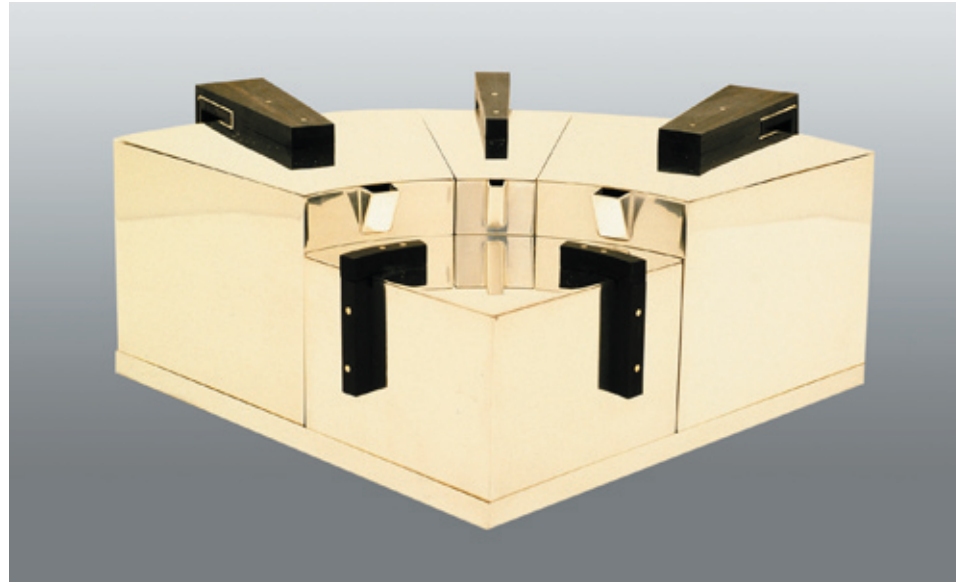


# masters of modernism



Art-Deco Coffee and Tea Set - Boris Lacroix

The design of this extraordinary set is attributed to the Frenchman Boris Lacroix, nevertheless we could not be certain, neither from the stamps on the original pieces, nor in any literature known to us. Until now, Lacroix is only known as a designer of lamps. The set consists of 2 large pots (for coffee, tea or hot water) one cream pot, one sugar bowl and the tray. The parts, put together, form a quarter circle. All the lines, seen from above, end up in the middle of the circle. The tray, separate of the set, forms with it a complete semi circle.

H: 4.49"  
Radius: 8.97"  
Ar: 2900 g  
Edition of 100

